

# RSIC THE REVOLUTION IN NOISE CONTROL

CHECK OUR **WEBSITE** FOR THE NEWEST INFORMATION AND ADDITIONS TO OUR PRODUCT LINE  
[WWW.PAC-INTL.COM](http://WWW.PAC-INTL.COM)

Rev #  
0119

*The sound of silence*



**PAC**  
**International**  
World Leader in Noise Control Solutions



**WE DON'T BUILD BUILDINGS - WE MAKE THEM QUIET**

© PAC International, LLC. All Rights Reserved. • (866) 774-2100 RSIC® is a registered Trade Mark

# THE RSIC-1 SOUND ISOLATION CLIP

## RSIC-1 Rubber Sound Isolation Clip

### RSIC-1 WOOD WALL ASSEMBLIES 1 & 2 HOUR:

**STC 56**

2x4 stud wall, RSIC-1, Drywall furring channel, R-19 insulation,  
1 layer 5/8" gypsum board each side

**UL 1 Hour Wall Assembly**



**STC 60**

2x4 stud wall, RSIC-1, Drywall furring channel, R-19 insulation,  
1 layer 5/8" gypsum board, 2 layers 5/8" gypsum board

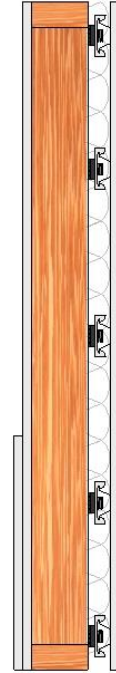
**UL 1 Hour Wall Assembly**



**STC 62**

2x4 stud wall, RSIC-1, Drywall furring channel, R-19 insulation,  
2 layers 5/8" gypsum board each side

**UL 1 and 2 Hour Wall Assembly**



**STC 56**

**1 HOUR**

**STC 60**

**1 HOUR**

**STC 62**

**1 OR 2 HOUR**

### CONVENTIONAL WOOD WALL ASSEMBLIES 1 & 2 HOUR:

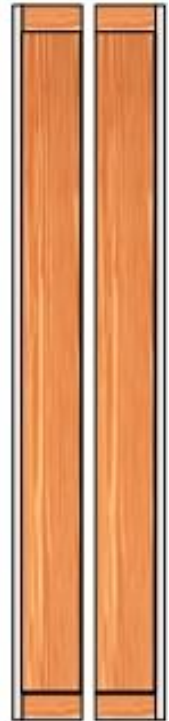
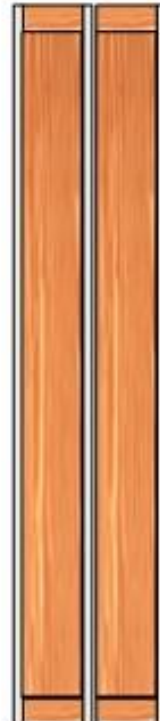
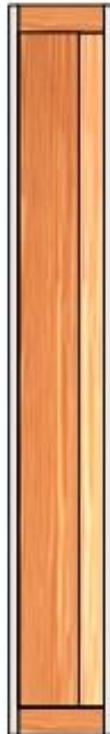
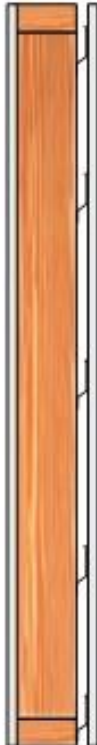
**STC 36**  
**1 HOUR**

**STC 36**  
**1 HOUR**

**STC 36**  
**1 HOUR**

**STC 36**  
**1 HOUR**

**STC 36**  
**1 HOUR**



# THE RSIC-1 SOUND ISOLATION CLIP

## RSIC-1 Rubber Sound Isolation Clip

### RSIC-1 STEEL WALL ASSEMBLIES 1 & 2 HOUR:

#### STC 58

3-5/8" 20 Ga Steel Stud, RSIC-1, Drywall furring channel, R-19 insulation,  
1 layer 5/8" gypsum board each side

UL 1 Hour Wall Assembly



#### STC 61

3-5/8" 20 Ga Steel Stud, RSIC-1, Drywall furring channel, R-19 insulation,  
1 layer 5/8" gypsum board, 2 layers 5/8" gypsum board

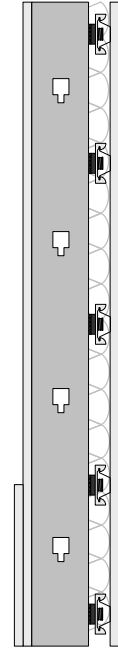
UL 1 and 2 Hour Wall Assembly



#### STC 64

3-5/8" 20 Ga Steel Stud, RSIC-1, Drywall furring channel, R-19 insulation,  
2 layers 5/8" gypsum board each side

UL 1 and 2 Hour Wall Assembly



#### STC 56

1 HOUR

#### STC 61

1 OR 2 HOUR

#### STC 64

1 OR 2 HOUR

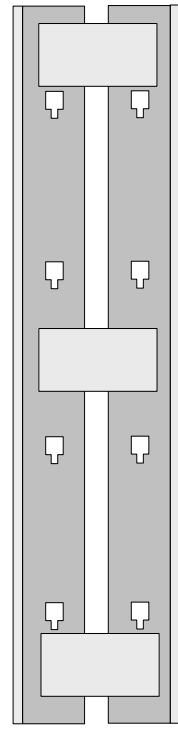
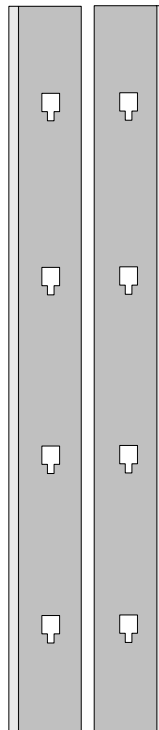
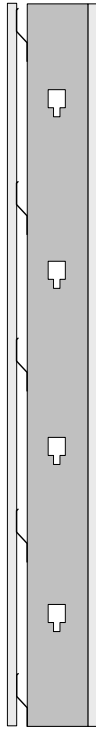
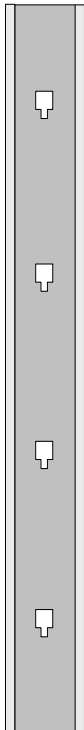
### CONVENTIONAL STEEL WALL ASSEMBLIES 1 & 2 HOUR:

STC 41  
1 HOUR

STC 49  
1 HOUR

STC 56  
No Rating

STC 48  
1 HOUR



# THE RSIC-1 SOUND ISOLATION CLIP

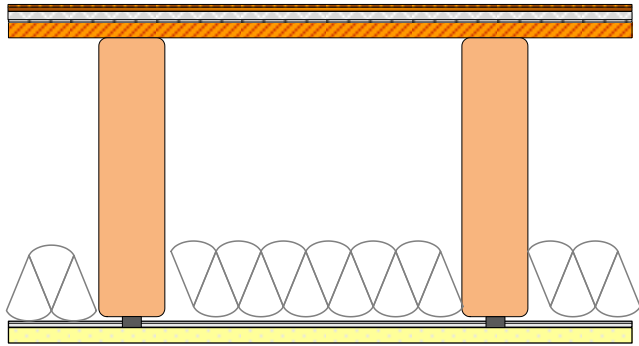
## RC-1 Boost Floor Ceiling Assemblies

### STC 58 IIC 52

Wood Laminate Flooring  
Resilient Pad  
1" Hacker Firm-Fill Gypcrete  
1 Layer Hacker SCM-250 Underlayment  
5/8" T&G Plywood Subfloor  
2" x 10" Solid Wood Joist @ 16" OC  
R-11 Fiberglass Batt Insulation NOM 6"  
RC-1 Boost Installed @ 16" x 24" OC  
RC-Channel @ 24" OC  
1 Layer 5/8" Pabco Type "C" Gyp



**1 HOUR Floor Ceiling Assembly** 

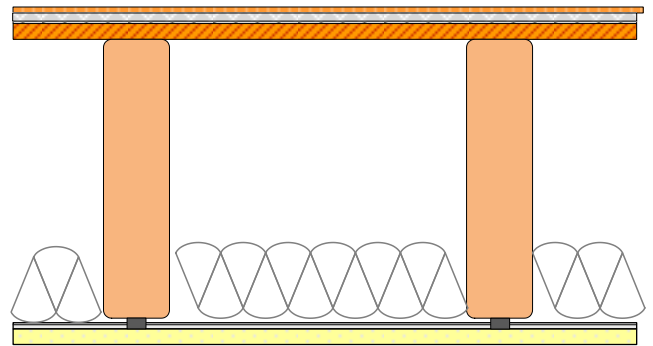


### STC 57 IIC 65

Carpet and Pad  
1" Hacker Firm-Fill Gypcrete  
1 Layer Hacker SCM-250 Underlayment  
5/8" T&G Plywood Subfloor  
2" x 10" Solid Wood Joist @ 16" OC  
R-11 Fiberglass Batt Insulation (Nom 6")  
RC-1 Boost Installed @ 16" x 24" OC  
RC-Channel @ 24" OC  
1 Layer 5/8" Pabco Flame Curb Type "C" Wallboard



**1 HOUR Floor Ceiling Assembly** 

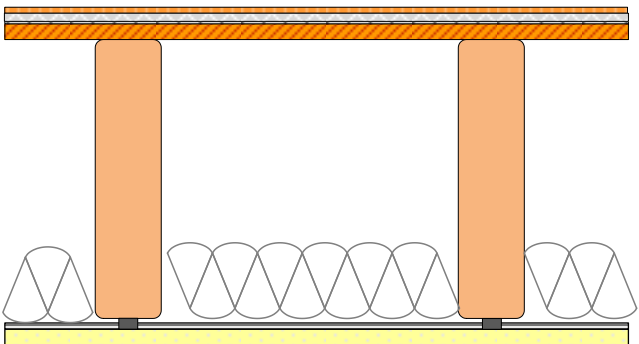


### STC 51 IIC 70

Carpet and Pad  
1" Hacker Firm-Fill Gypcrete  
5/8" T&G Plywood Subfloor  
2" x 10" Solid Wood Joist @ 16" OC  
R-11 Fiberglass Batt Insulation (Nom 6")  
RC-1 Boost Installed @ 16" x 24" OC  
RC-Channel @ 24" OC  
1 Layer 5/8" Pabco Flame Curb Type "C" Wallboard



**1 HOUR Floor Ceiling Assembly** 

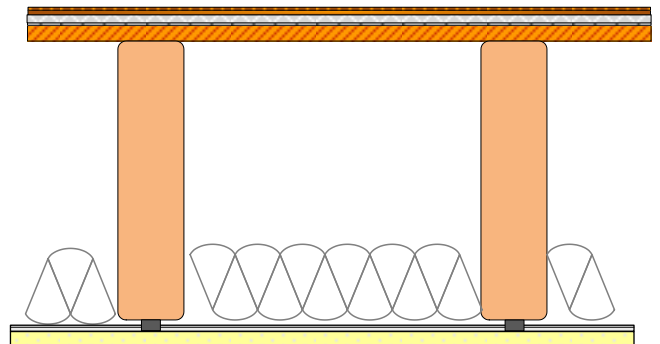


### STC 59 IIC 56

Wood Laminate Flooring  
Resilient Pad  
1" Hacker Firm-Fill Gypcrete  
1 Layer Hacker SCM-250 Underlayment  
5/8" T&G Plywood Subfloor  
2" x 10" Solid Wood Joist @ 16" OC  
R-11 Fiberglass Batt Insulation (Nom 6")  
RC-1 Boost Installed @ 16" x 24" OC  
Dietrich RC-Deluxe 24" @ OC.  
1 Layer 5/8" Pabco Flame Curb Type "C" Wallboard



**1 HOUR Floor Ceiling Assembly** 



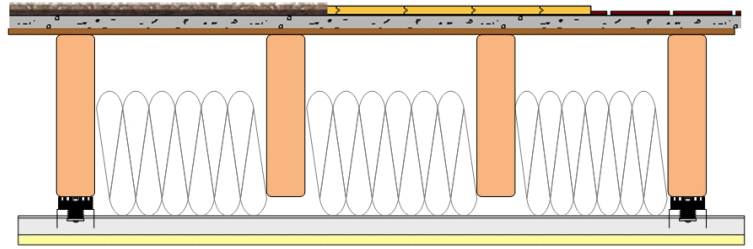
# THE RSIC-1 SOUND ISOLATION CLIP

## RSIC-1 WOOD/FLOOR CEILING ASSEMBLIES 1 & 2 HOUR

### UL 1 Hour Floor Ceiling Assembly

<b>Carpet</b>	<b>STC 61</b>	<b>IIC 74</b>
<b>Hard Wood</b>	<b>STC 61</b>	<b>IIC 55</b>
<b>Tile</b>	<b>STC 61</b>	<b>IIC 53</b>

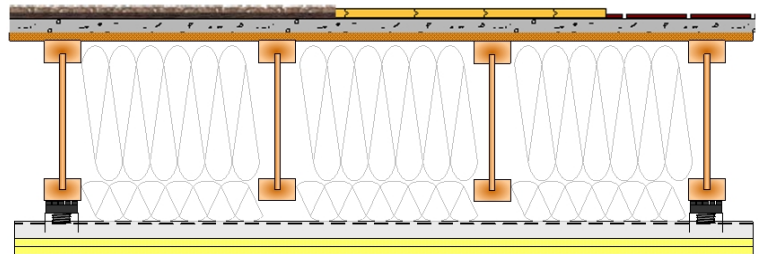
(Open Web Truss)



### UL 1 Hour Floor Ceiling Assembly

<b>Carpet</b>	<b>STC 61</b>	<b>IIC 74</b>
<b>*Hard Wood</b>	<b>STC 61</b>	<b>FIIC 60</b>
<b>Tile</b>	<b>STC 61</b>	<b>FIIC 63</b>

\* No Acoustical Underlayment Installed  
F = Indicates Field Test

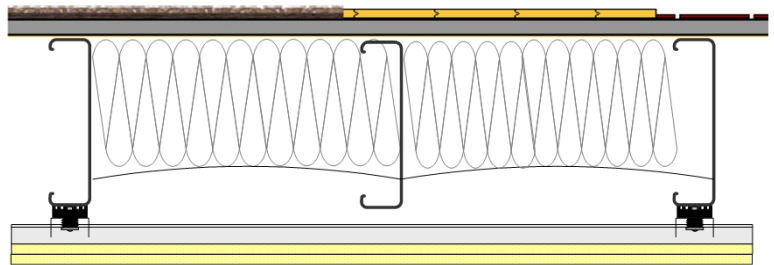


## RSIC-1 STEEL CEILING ASSEMBLIES 1 & 2 HOUR

### UL 1 Hour Floor Ceiling Assembly

<b>Carpet</b>	<b>STC 60</b>	<b>IIC 70</b>
<b>Hard Wood</b>	<b>STC 60</b>	<b>IIC 60</b>
<b>Tile</b>	<b>STC 60</b>	<b>FIIC 59</b>

F = Indicates Field Test

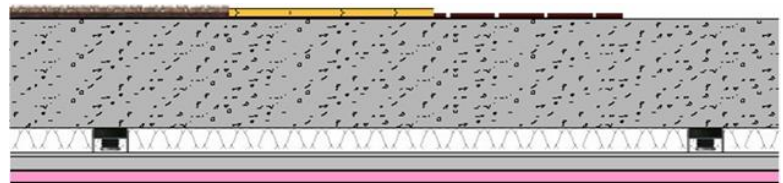


## RSIC-1 CONCRETE CEILING ASSEMBLIES 1 & 2 HOUR

### UL 1 Hour Floor Ceiling Assembly

<b>Carpet</b>	<b>STC 60</b>	<b>FIIC 84</b>
<b>Hard Wood</b>	<b>STC 60</b>	<b>FIIC 74</b>
<b>Tile</b>	<b>STC 60</b>	<b>FIIC 70</b>
<b>Bare</b>	<b>STC 60</b>	<b>FIIC 51</b>

F = Indicates Field Test

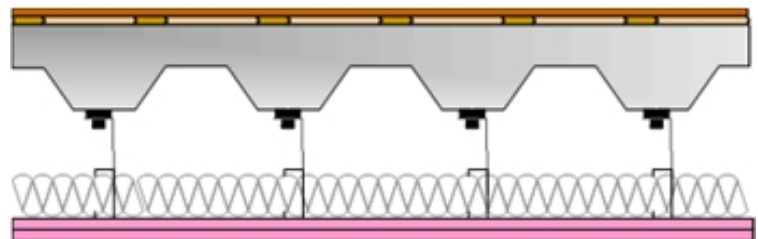


## RSIC-1 STEEL & CONCRETE CEILING ASSEMBLIES 1 & 2 HOUR

### UL 1 Hour Floor Ceiling Assembly

<b>Hard Wood</b>	<b>STC 60</b>	<b>FIIC 74</b>
------------------	---------------	----------------

F = Indicates Field Test





# THE RSIC-1 SOUND ISOLATION CLIP

## RSIC-1 WOOD/FLOOR CEILING ASSEMBLIES 1 & 2 HOUR

### ANNOUNCING: The Lowest Cost Floor-Ceiling System using RSIC technology.

Our research team has developed a breakthrough Floor-Ceiling design which eliminates the need for Light Weight Gypsum Concrete and Acoustical Mats, while exceeding code for both Fire and Sound.



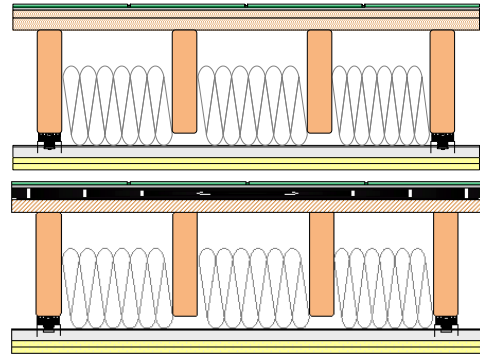
#### UL 1 Hour Fire Resistice Design Assembly

RSIC-1 Ceramic Tile system  
w/o Light Weight Gypsum Concrete

Title: [STC 57 IIC 56](#)  
[RAL IN08-018](#)

RSIC-1 Ceramic Tile system  
with Light Weight Gypsum Concrete

Title: [STC 55 IIC 53](#)  
[RAL IN09-011](#)



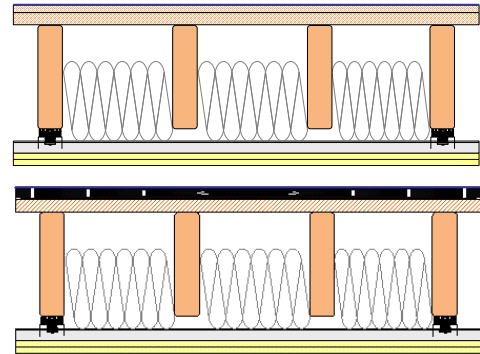
#### UL 1 Hour Fire Resistice Design Assembly

RSIC-1 Vinyl system  
w/o Light Weight Gypsum Concrete

Title: [STC 57 IIC 52](#)  
[RAL IN08-016](#)

RSIC-1 Vinyl system  
with Light Weight Gypsum Concrete

Title: [STC 55 IIC 54](#)  
[RAL IN09-009](#)



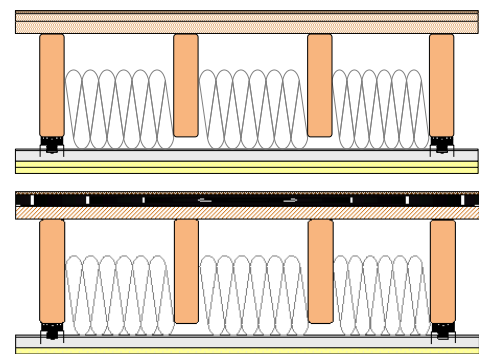
#### UL 1 Hour Fire Resistice Design Assembly

RSIC-1 Laminate Wood system  
w/o Light Weight Gypsum Concrete

Title: [STC 57 IIC 52](#)  
[RAL IN08-016](#)

RSIC-1 Laminate Wood system  
with Light Weight Gypsum Concrete

Title: [STC 55 IIC 54](#)  
[RAL IN09-012](#)



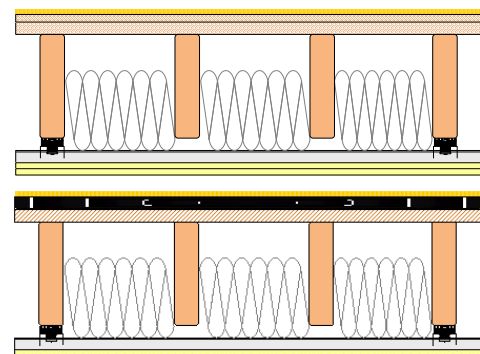
#### UL 1 Hour Fire Resistice Design Assembly

RSIC-1 Carpet system  
w/o Light Weight Gypsum Concrete

Title: [STC 57 IIC 77](#)  
[RAL IN08-017](#)

RSIC-1 Carpet system  
With Light Weight Gypsum Concrete

Title: [STC 55 IIC 78](#)  
[RAL IN09-010](#)



# THE RSIC-1 SOUND ISOLATION CLIP

## *RSIC Safe and Sound*



### Wood Wall Systems

1 Hour	2 Hour	3 Hour
	U301	
U305		
U309		
U311		
U320		
U331		
	U334	
U340		
U341		
	U342	
U344		
U356		
U524		
V310		
	V323	
	V324	
V438	V438	V438
V481	V481	V481
	V488	V488

### Steel Wall Systems

1 Hour	2 Hour	3 Hour
U419	U419	
U423	U423	
U440		
U451		
	U453	
		U455
U465		
U473		
U493	U493	
V469		
V477	V477	
V478	V478	
V489	V489	
V490		
V496		
	V498	
GA-WP1013		
GA-WP4153	GA-WP4153	
	U411	
U417	U417	U417
	U421	
W425	W425	
W440	W440	W440

### Steel Elevator Shaft Wall Systems

1 Hour	2 Hour	3 Hour
U415	U415	
V455	V455	
W419	W419	W419

### Steel Truss Floor Ceiling Systems

1 Hour	2 Hour	3 Hour
G501		
G502		
	G503	
	G504	
	G505	
G507		
	G510	
		G512
G524	G524	
	G525	G525
G561	G561	
	P573	

### Solid Wood Floor Ceiling Systems

1 Hour	2 Hour	3 Hour
L502		
	L505	
L510		
	L511	
L513		
L514		
L516		
L523		
	L532	
L569		
L590		
L593		
M514		
M519		
M521	M521	
M525		
M531		
M537		

### I Joist Wood Floor Ceiling Systems

1 Hour	2 Hour	3 Hour
L518		
L547		
L570		
L589		
ITS LP60-01		
M502		
M506		

### Open Web Truss Wood Floor Ceiling Systems

1 Hour	2 Hour	3 Hour
L521		
L528		
L534		
L542		
L546		
L550		
L562		
L563		
L574		
L576		
L579		
L582		
L587		
ITS TSC60-01		
M501		
M508		
M509		
	M510	
	M521	
WP-FC5102		
WP-FC5103		

### Steel Joist Floor Ceiling Systems

1 Hour	2 Hour	3 Hour
G534		
G551		
	G552	
G565		
L573		
G578		
WFCi 07083a		
WFCi 07083		
H501	H501	
H505	H505	
M515		
M527		
P561	P561	
P562		

# THE RSIC-1 SOUND ISOLATION CLIP



RSIC-1



The **RSIC-1** is designed for use with any wood framed, steel framed, CMU, or concrete wall and ceiling system where noise control is needed. The RSIC-1 assembly decouples and isolates the gypsum board or plywood from the structure increasing the acoustical performance of the system.

The RC-1 Boost increases the acoustical performance of RC-1 Channel in any wood or steel application where noise control is required. This includes, wood framed or steel framed wall and ceiling systems. The RC-1 Boost product decouples the gypsum board from the structure, giving the assembly enhanced acoustical performance.



RC-1 Boost



RSIC-U



RSIC-WHI



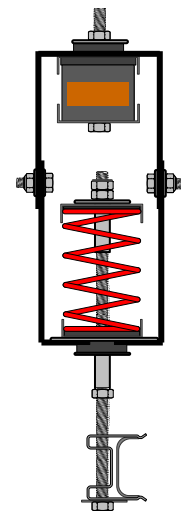
RSIC-1 ADM



RSIC-SI-CRC EZ



RSIC-SI-1 Ultra



RSIC-SI-FF BRC